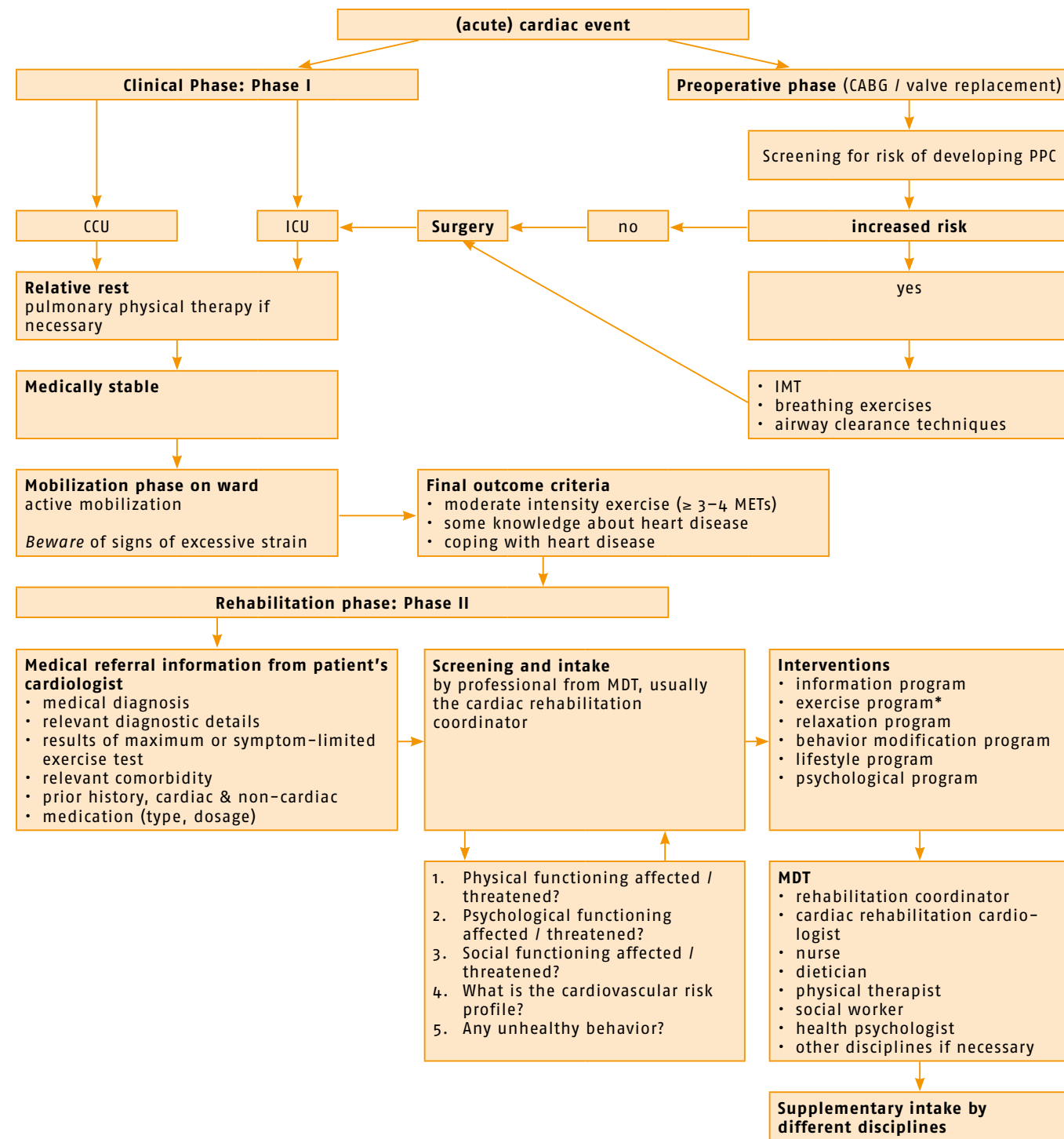


KNGF Guideline

Cardiac Rehabilitation

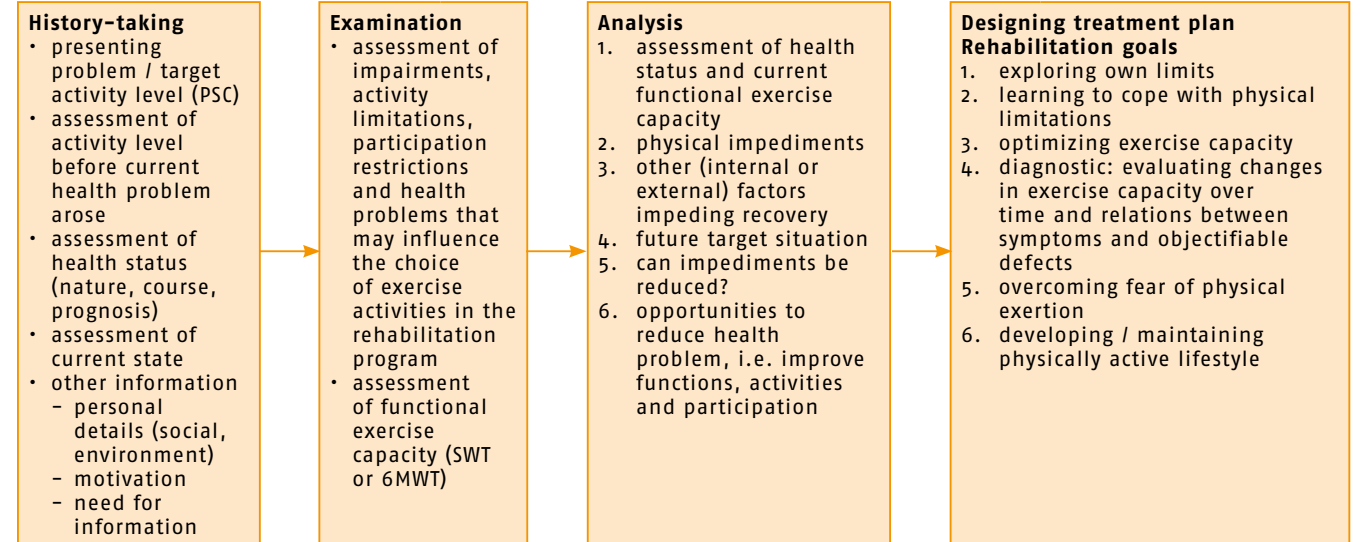
Coronary heart disease



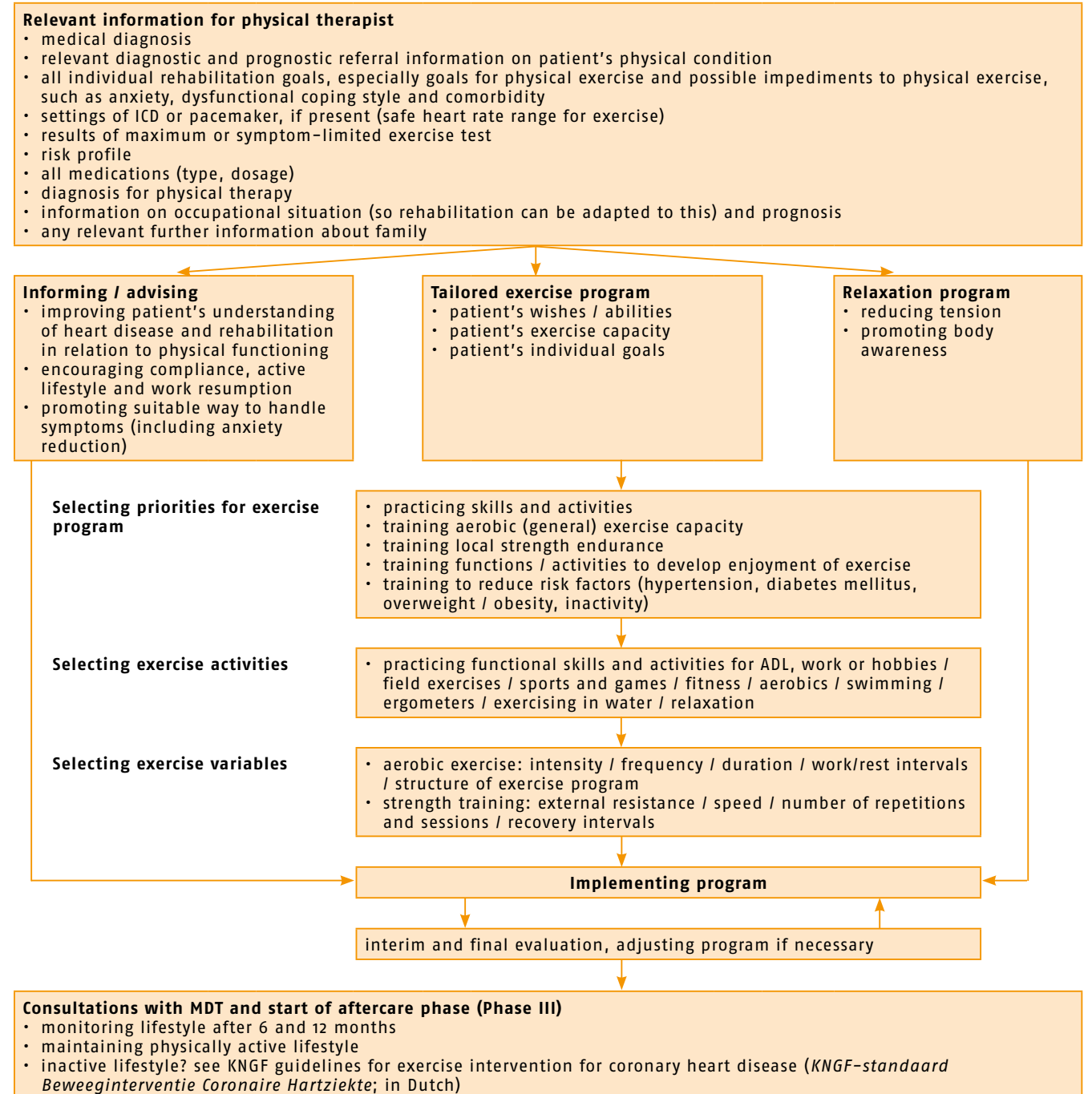
* The exercise program is part of the multidisciplinary cardiac rehabilitation.

6MWT = Six-minute walk test; CABG = coronary-artery bypass graft; CCU = coronary care unit; ICD = implantable cardioverter defibrillator; ICU = intensive care unit; IMT = inspiratory muscle training; MDT = multidisciplinary cardiac rehabilitation team; MET = metabolic equivalent of task; PPC = postoperative pulmonary complications; PSC = patient-specific complaints; SWT = shuttle walk test; VO₂max = maximum oxygen uptake

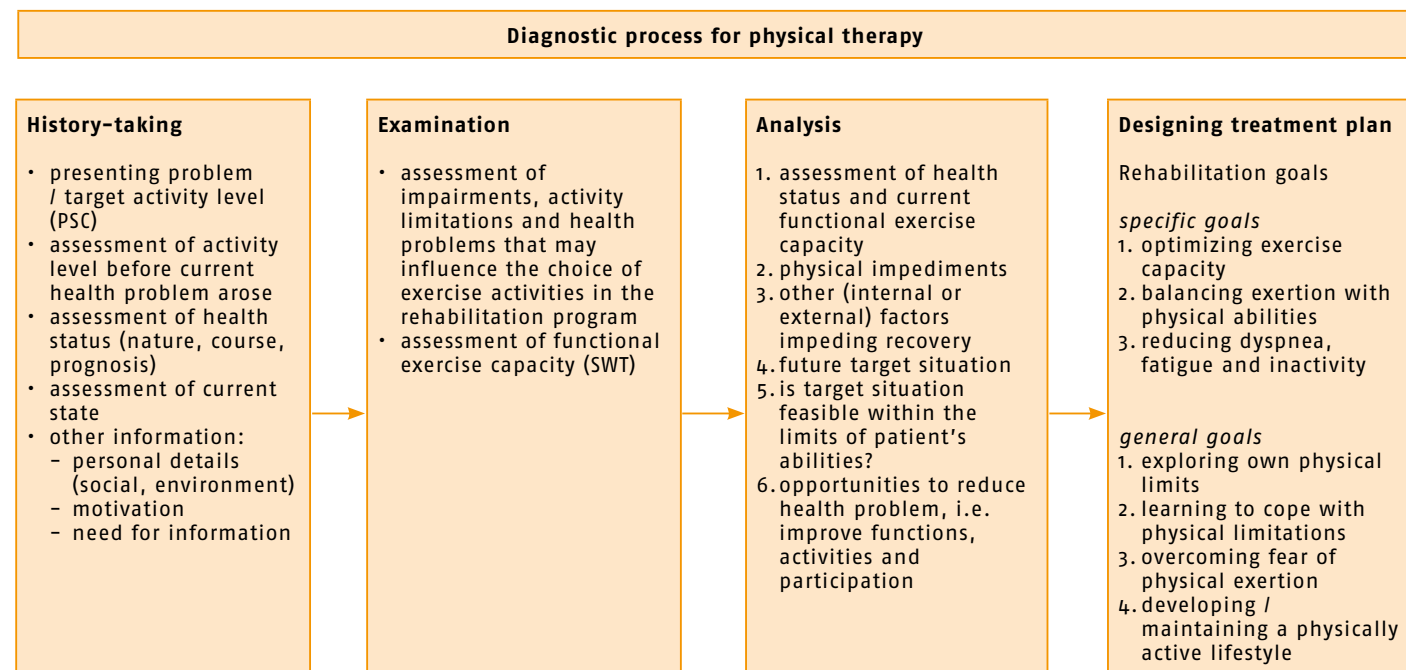
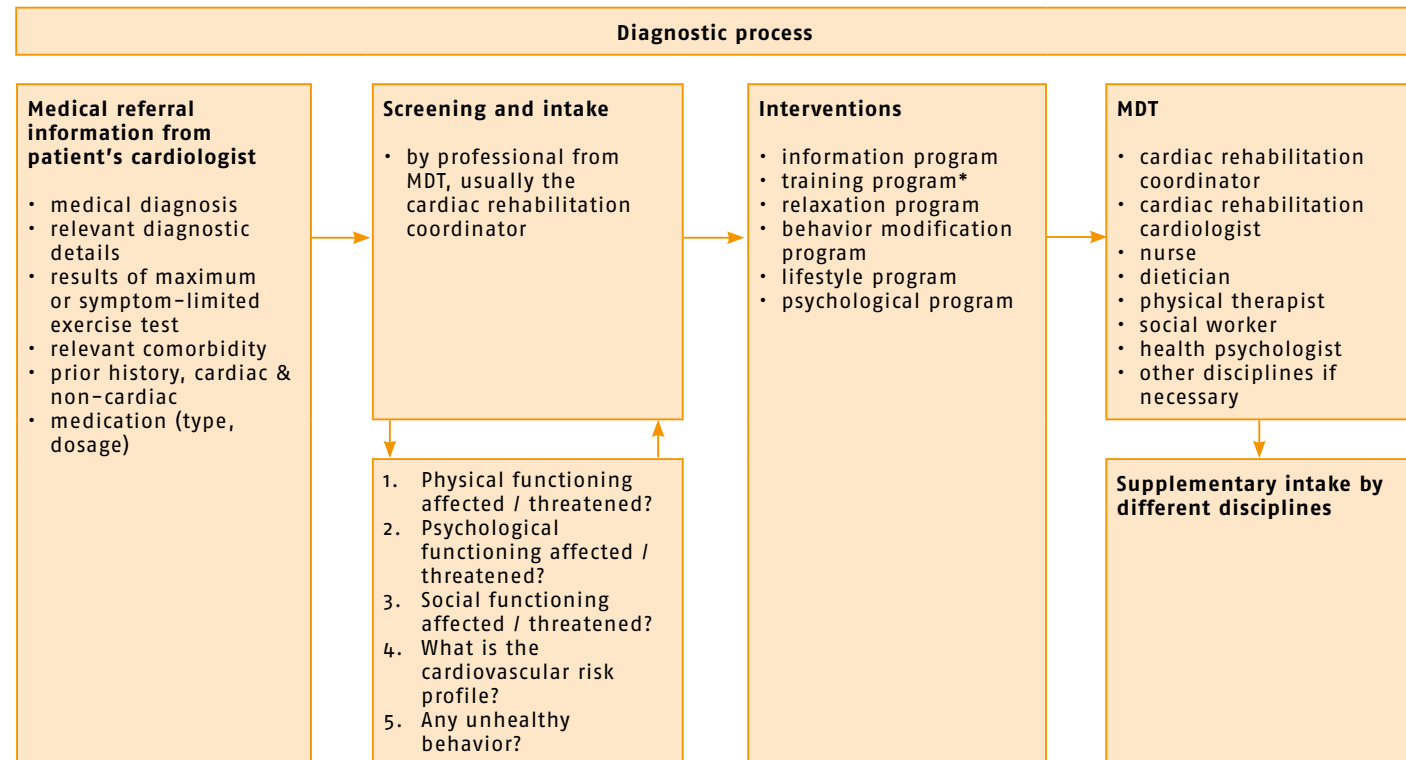
Diagnostic process for physical therapy



Therapeutic process



Chronic heart failure



* The training program is part of the multidisciplinary cardiac rehabilitation. For locations of cardiac rehabilitation see the Preface and the introduction to the *Verantwoording & Toelichting* (review of the evidence) document.

ICD = implantable cardioverter defibrillator; MDT = multidisciplinary cardiac rehabilitation team; PSC = patient-specific complaints; SWT = shuttle walk test; VO_{2max} = maximum oxygen uptake

